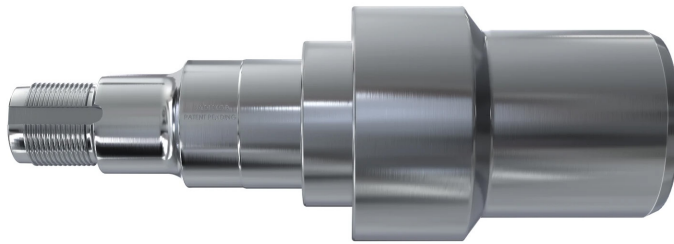




# 10KGD Spindle

## INSTALLATION INSTRUCTIONS



**Dexter Axle Replacement, 10,000 General Duty, new-style Dexter axle, D100G, 25580 bearing, 387A bearing, 10-51 seal**

1. Cut spindle ½" from center of the existing spindle weld towards the brake flange. (Clean straight cut required)
2. Insert the new Spindle into axle pipe ensuring proper alignment.
3. Completely weld the Spindle to axle pipe around pipe. (Certified Welder Required)